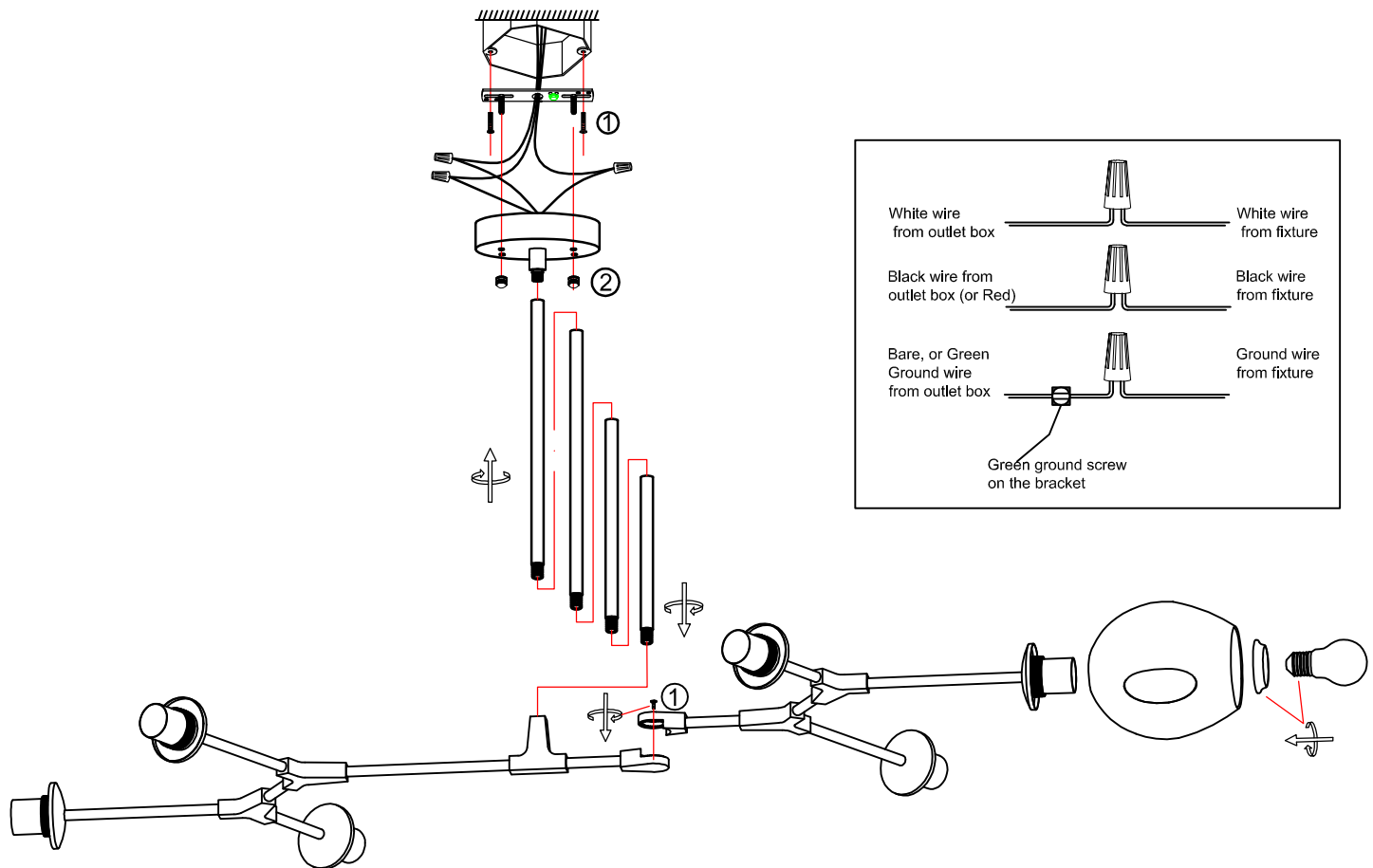
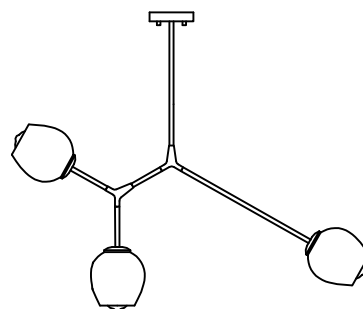


INSTRUCTION MANUAL

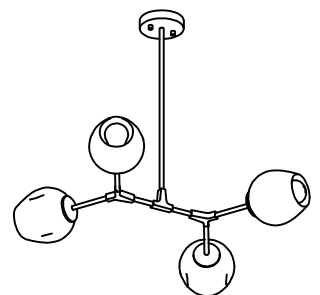
1. Always ensure the power is completely OFF before any installation or maintenance.
2. The fixture must be installed by a qualified licensed electrician



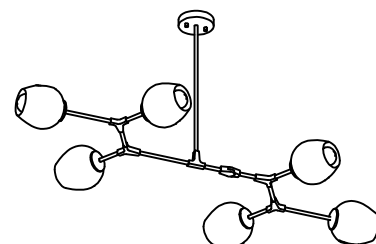
1. Ensure main supply is switched off.
2. Put connectors together and use screw (1) to tighten them.
3. Make wire across rods, canopy in order, and screw down all rods
4. Have the mounting screw (2) through the mounting bracket and screw into octagon box.
5. Connect the wires using wire nuts. Tight mounting bracket and back plate using screws (3).
6. Fix the glass shade firmly into fixture with outer ring.
7. Install light bulb (not provided) into the socket.



**P2069-3BK
P2069-3CH
P2069-3AB**



**P2069-4BK
P2069-4CH
P2069-4AB**



**P2069-6BK
P2069-6CH
P2069-6AB**